



GoodaleMillerTeam
CENTURY 21 MILLER REAL ESTATE LTD. BROKERAGE



267 Eastcourt Road | Oakville



EXQUISITE CUSTOM HOME WITH BACKYARD OASIS

Nestled on a tranquil street in prestigious Southeast Oakville, this meticulously maintained family home sits on a beautifully landscaped lot framed by mature trees. Thoughtfully updated, it seamlessly blends upscale traditional elegance with contemporary refinement, offering a perfect balance of charm and modern luxury.

Stepping inside, the interior exudes timeless sophistication, featuring oversized windows and a well-planned layout that balances both form and function. Detailed millwork frames the doorways and pass-throughs, while a blend of honed travertine and oak flooring defines the living spaces. The office offers picturesque views of the front yard, while the dedicated dining room provides an inviting space perfect for entertaining.

The servery conveniently connects to the Chef’s kitchen, which boasts full-height cabinetry, professional-grade appliances, and an expansive central island with additional seating. The bright breakfast area is ideal for family meals, with French doors leading to the rear covered porch. The inviting family room is a warm and cozy retreat, complete with a gas fireplace, soaring ceiling and stunning views of the backyard oasis.

Designed with everyday convenience in mind, the fully outfitted mudroom is the perfect drop zone for the family. This well-equipped space includes a washer and dryer, built-in cabinetry, and coat hooks. A secondary powder room is also located here, with direct access to both the garage and rear yard.

The second level is perfectly suited for family living. The primary retreat features double-door entry, his-and-her walk-in closets, and a spa-like ensuite with custom vanities, a luxurious soaking tub, and a separate shower. The second and third bedrooms share access to an oversized Jack-and-Jill ensuite, while the fourth bedroom offers a double-door closet and a private ensuite.

The fully finished lower level extends the living space, offering a large recreation room with a seating area in front of a beautiful stone gas fireplace. Additional features include a games area, a home gym, a wine cellar, a cedar closet, extra storage and an additional bedroom—making this level perfect for entertaining or accommodating guests.

The backyard oasis is truly a showstopper, featuring a fully landscaped retreat with lush green space and a stunning pool complete with a cascading waterfall feature. The covered porch, equipped with a built-in BBQ and dining area, is perfect for effortless entertaining. Whether enjoying summer evenings by the outdoor fireplace or hosting unforgettable gatherings, this backyard is the ultimate entertainer’s dream.



FRONT ENTRY



FOYER



OFFICE



DINING ROOM





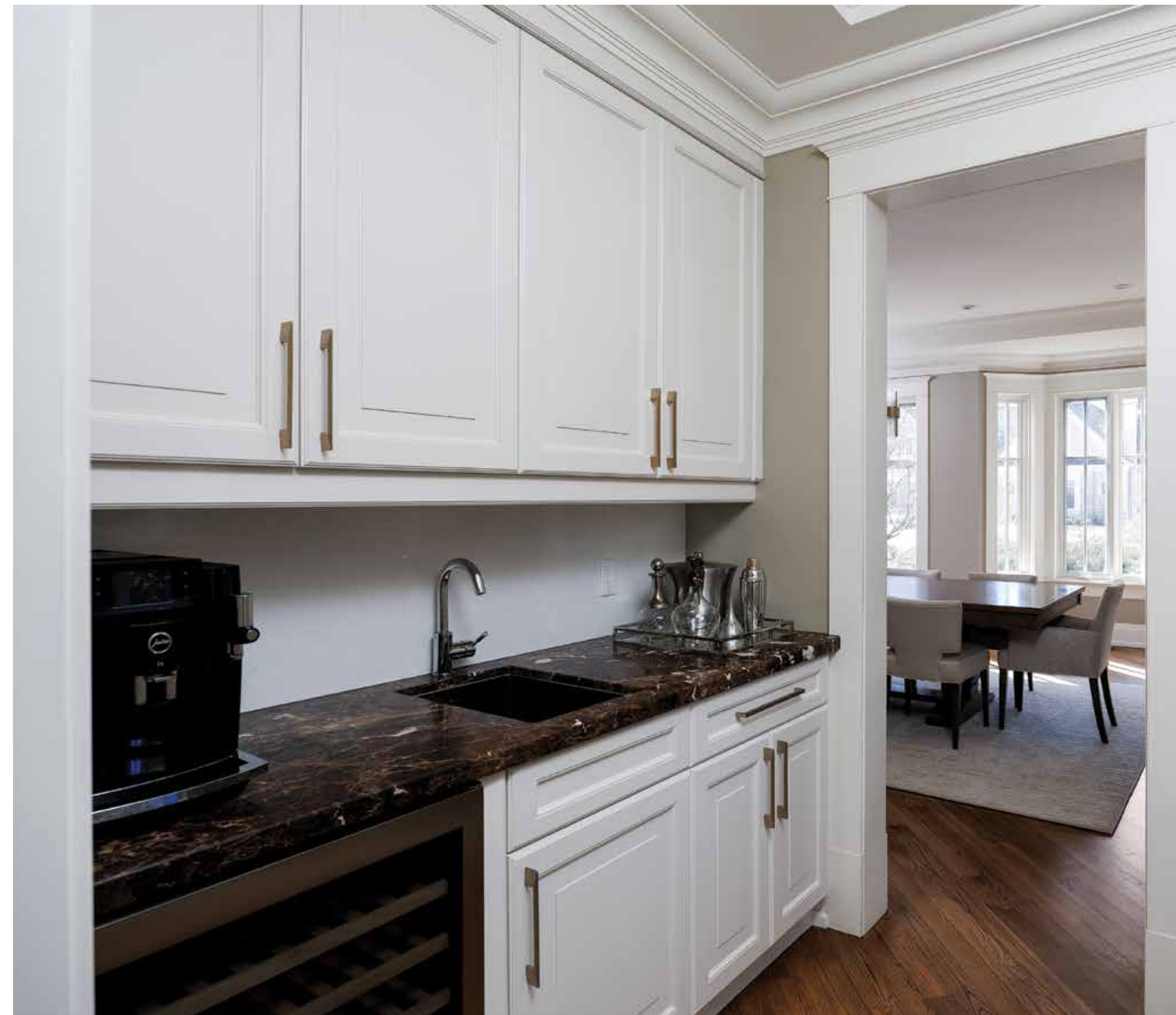
KITCHEN



KITCHEN



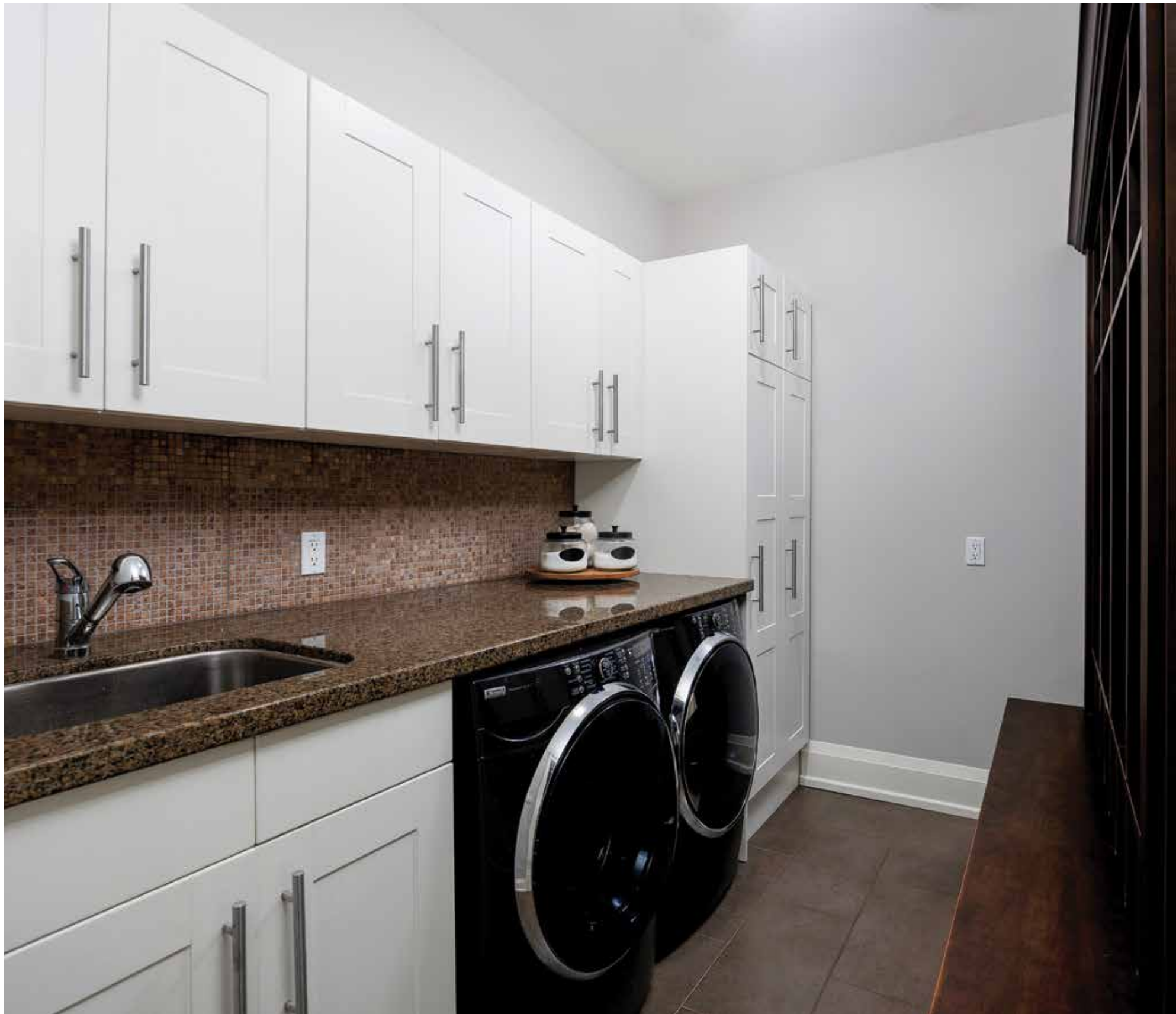
BREAKFAST AREA



SERVERY



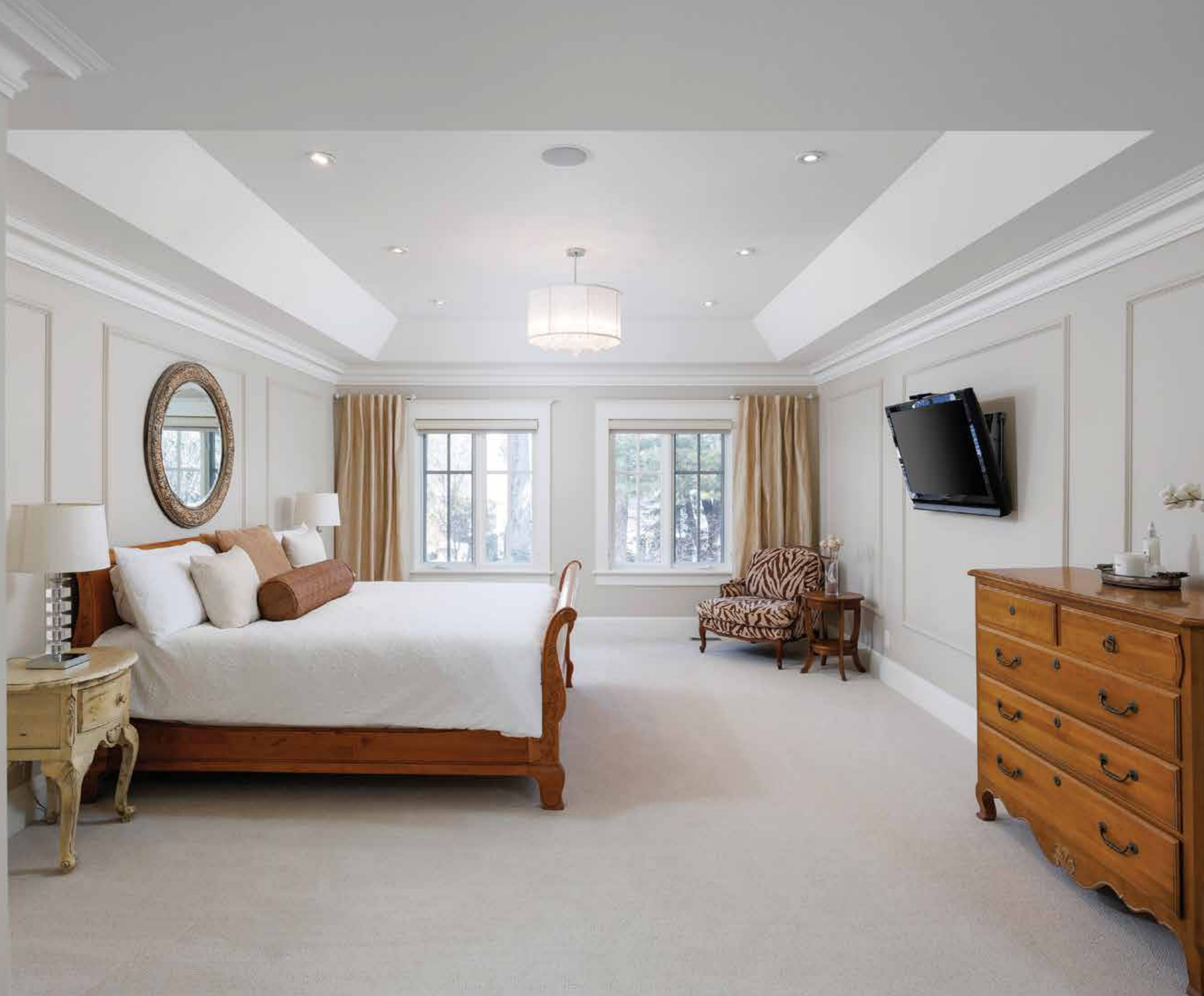
FAMILY ROOM



LAUNDRY / MUDROOM



BACK HALL POWDER ROOM



PRIMARY BEDROOM
& ENSUITE



SECOND BEDROOM



THIRD BEDROOM



SHARED ENSUITE BATH



SHARED ENSUITE BATH



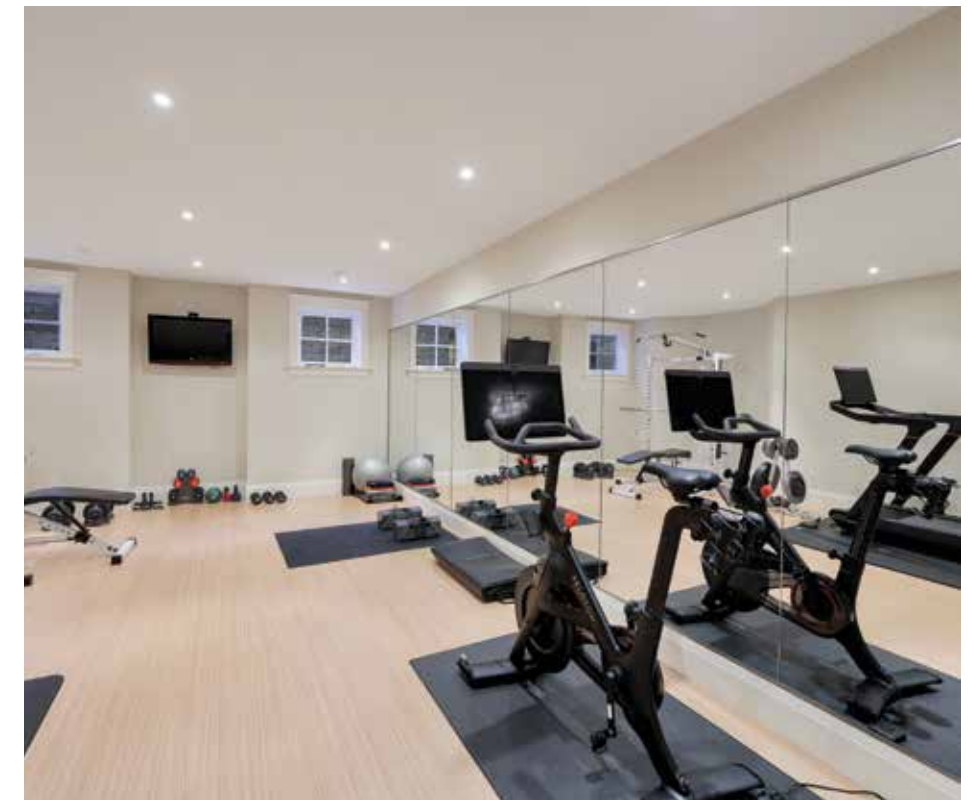
FOURTH BEDROOM



ENSUITE BATH



LOWER LEVEL
RECREATION ROOM



LOWER LEVEL
BUILT-IN OFFICE & EXERCISE ROOM



LOWER LEVEL
LANDING & WINE CELLAR



LOWER LEVEL
LANDING, BEDROOM & BATHROOM





REAR ELEVATION & INGROUND POOL



POOL HOUSE, OUTDOOR FIREPLACE & WATERFALL FEATURE



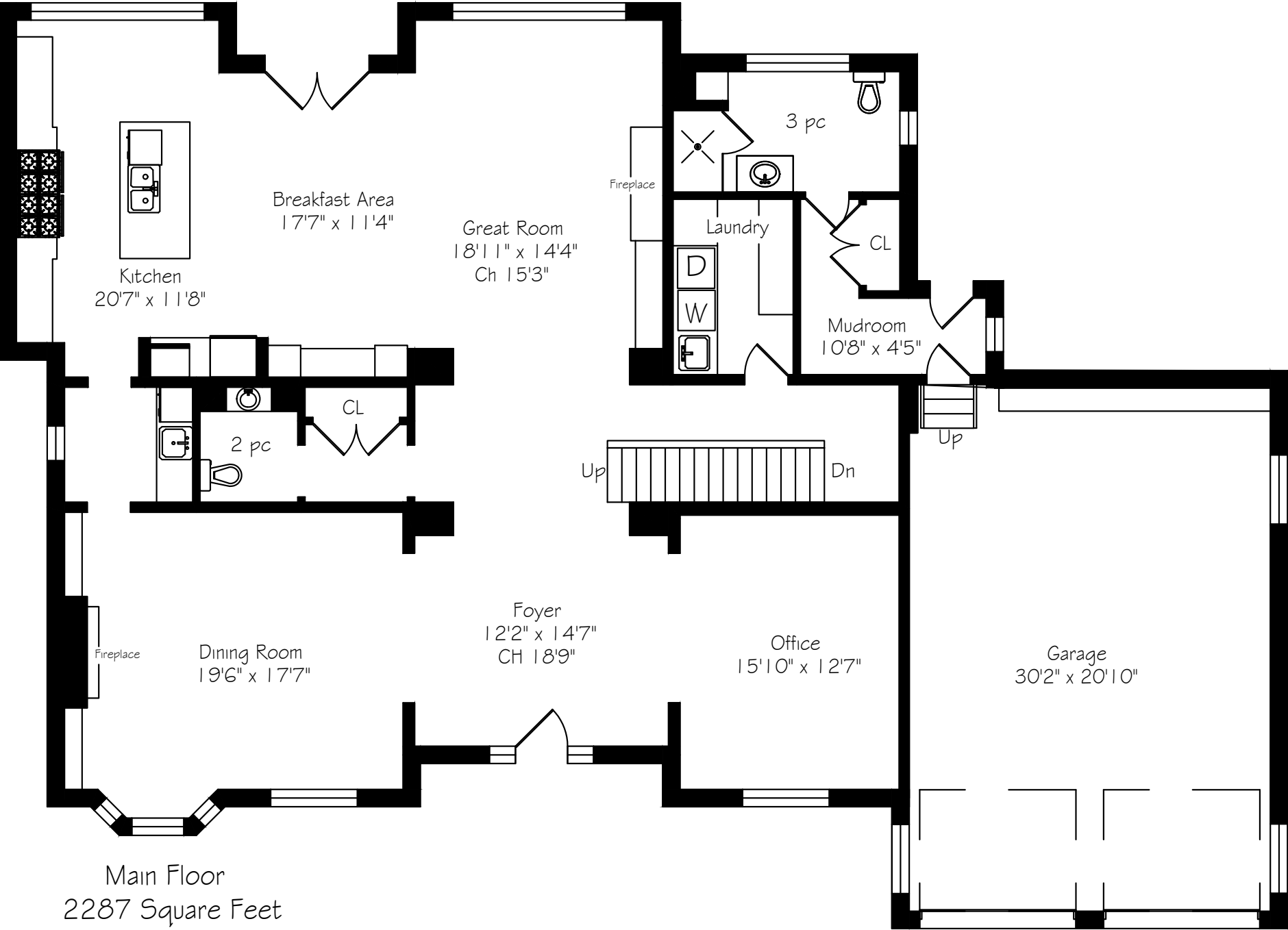


REAR YARD & OUTDOOR SAUNA



COVERED PATIO & OUTDOOR FIREPLACE

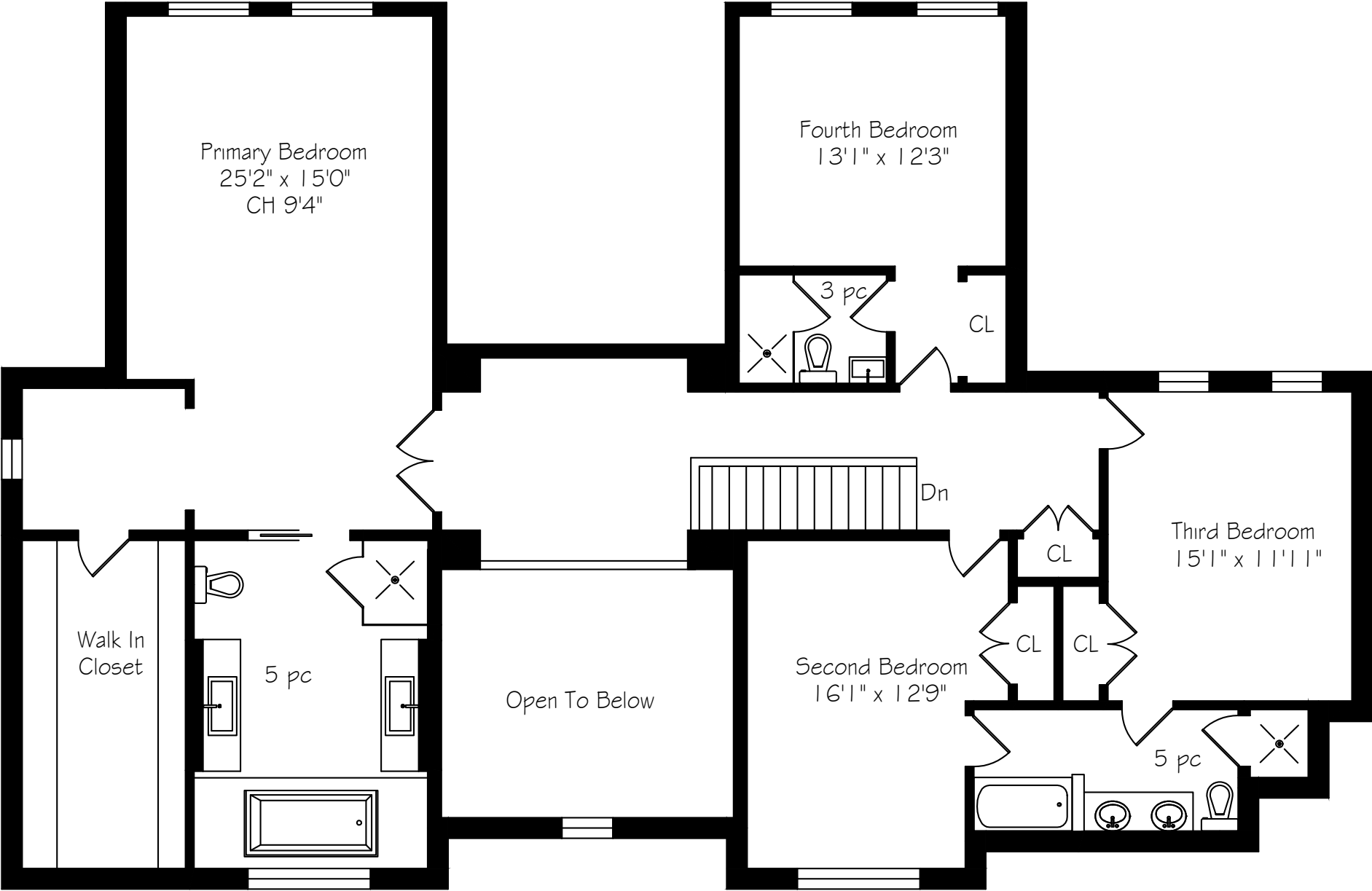
MAIN LEVEL FLOOR PLANS



Main Floor
2287 Square Feet
+ 702 Garage

*Room sizes should be considered approximate since measurements are subject to certification.

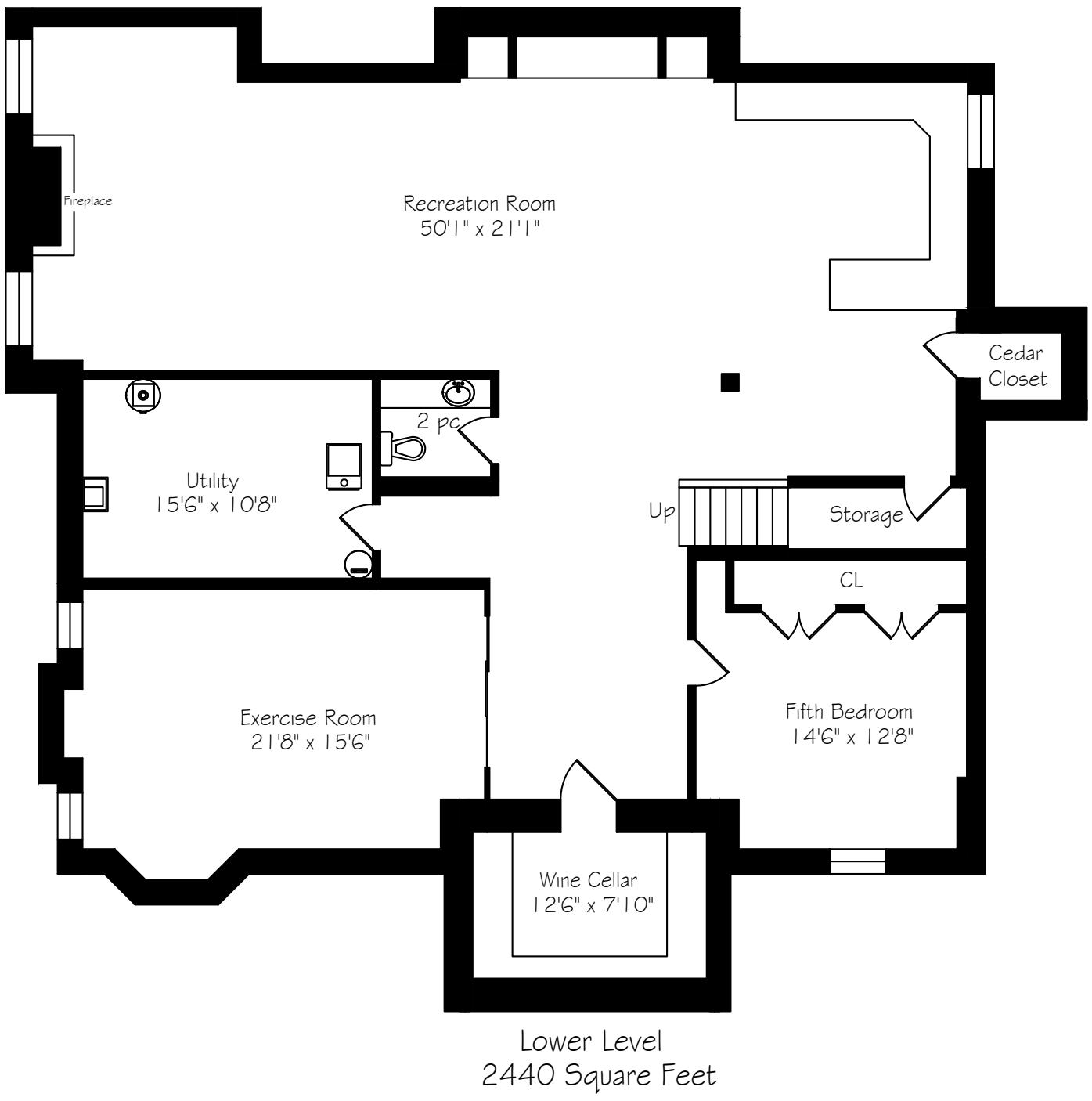
SECOND LEVEL FLOOR PLANS



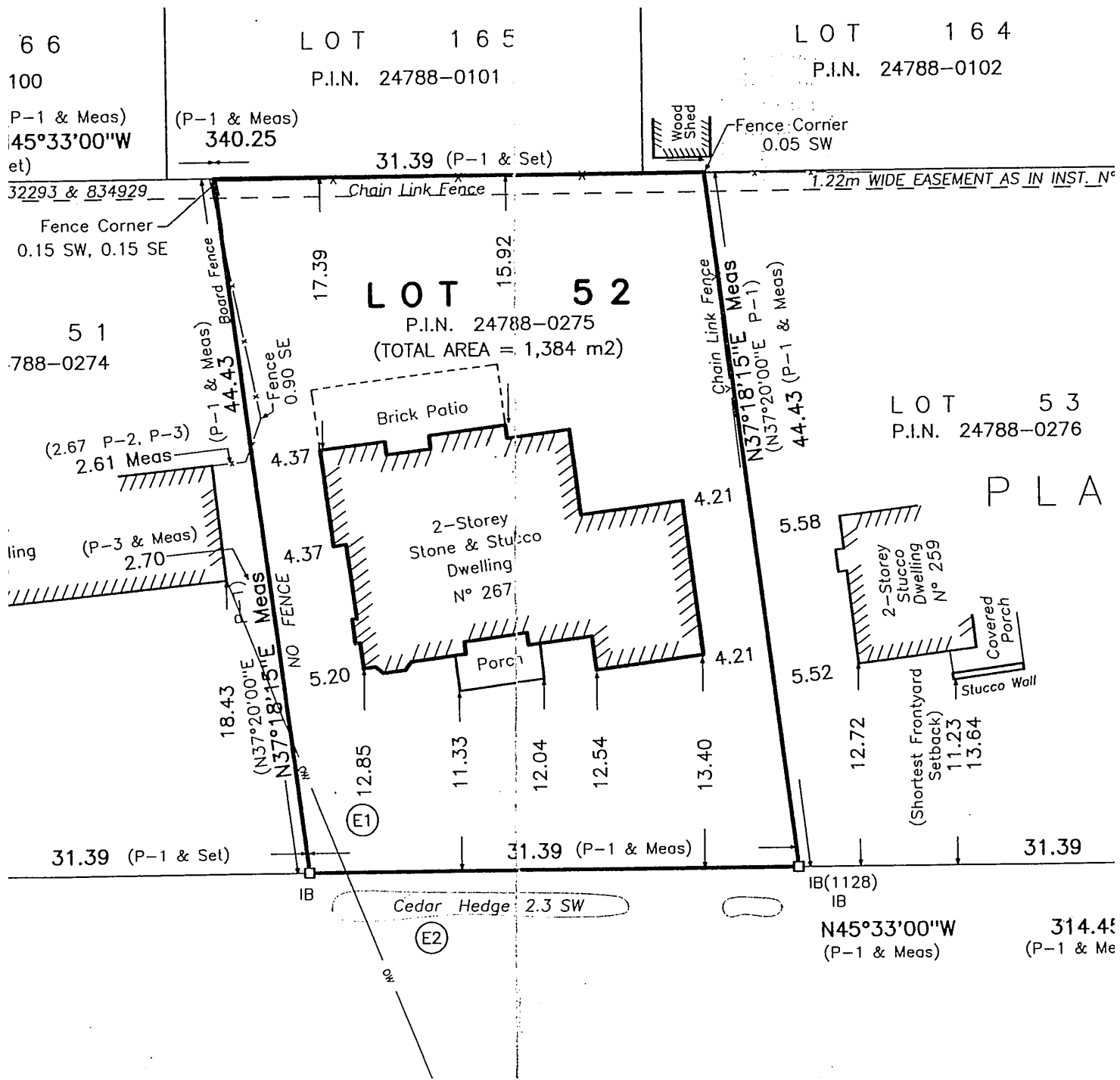
Second Floor
1996 Square Feet

*Room sizes should be considered approximate since measurements are subject to certification.

LOWER LEVEL FLOOR PLANS



SURVEY



*Room sizes should be considered approximate since measurements are subject to certification.

LUXURY FEATURES

EXTERIOR FEATURES

- Stucco and stone exterior façade
- Two-car garage with wood doors and metal door to back hall access
- Poured concrete foundation
- Premium designer asphalt shingles
- Asphalt driveway with interlocking pavers boarder
- Aluminum Clad wood framed windows
- Landscape lighting
- Front and rear yard irrigation
- Extensive hardscaped patio and deck
- Backyard storage house with change room and outdoor shower
- Natural gas fireplace with seating area
- Saltwater pool with waterfall feature
- Covered terrace with outdoor BBQ area
- Neapolean gas fireplace with Danby refrigerator
- Outdoor sauna (2021)
- Four exterior cameras
- Alarm security with ADT
- 50 solar panels, 11 Kilowatt system (2018)
- Saltwater pool with interior lighting and flagstone surround

GARAGE

- Epoxy floor
- 220 volt service for EV charging
- Shelving and cabinetry
- Access into the back hall

INTERIOR FEATURES

- Two storey foyer and family room
- 9’ ceilings on main floor except where noted
- 8’ ceilings on second floor

- Oak staircase with stain finish with custom wrought iron
- Plush ivory carpet located on second floor and basement
- Painted solid interior door with 4 ½” trim and 7 ½” baseboard on first and second floor
- Mantle high gas fireplace with marble veneer facing & architecturally designed styled wood shelf mantle or plaster in family room, dining room and recreation room
- Heated flooring on all stone surfaces and basement
- Plaster crown mouldings throughout
- Pot lights
- Pre finished oak hardwood flooring
- Lazer cut wood vents
- Ceiling speakers

-MAIN LEVEL-

FOYER

- Walnut front door with sidelights
- Two storey entrance
- Granite flooring

DINING ROOM

- Hanging pendant
- Gas fireplace with stone surround
- Built-in glass shelving
- Oversized windows
- Wall speakers

DEN

- Hanging pendant
- Coffered ceiling
- Large oversized windows to the front yard

SERVERY

- Oval window
- Custom upper and lower cabinetry with granite countertop
- Blanco sink with goose neck faucet
- Under counter Magnum Cellars wine fridge

KITCHEN

- Full height custom cabinetry with uppers and lowers
- Thermal gas range with 6 burners and griddle
- Broan exhaust fan
- Ceramic backsplash
- Granite countertops with upper and lower undermount lighting
- Wall Bosch oven
- Panasonic microwave
- 36’ SubZero fridge/freezer
- Oversized island with granite countertop
- Large stainless steel under-mount sink with Gooseneck faucet
- Two pendant lights
- Bosch dishwasher (2024)
- Pull-out garbage

BREAKFAST AREA

- Hanging pendant
- Desk area with custom cabinetry
- Cabinetry with upper glass display
- Double glass doors to exterior rear yard

FAMILY ROOM

- Two storey room with oversized windows
- Gas fireplace with brick surround
- Built-in cabinetry
- Uplighting in ceiling trim

POWDER ROOM

- Mosaic feature wall
- Wall sconces
- Counter sink with single lever wall faucet

BACK HALL MUDROOM / LAUNDRY ROOM

- Built-in cabinetry featuring bench seat and utility closets
- Kenmore washer/dryer
- Large sink with faucet
- Granite countertop with mosaic backsplash
- Ceramic flooring
- Ceiling fixture

POWDER ROOM

- Custom vanity with Kohler undermount sink with goose neck faucet
- Granite countertop
- Glass shower with porcelain surround, shower wall and mosaic flooring
- Handheld shower faucet with temperature control
- Single closet cabinet with shelving
- Large window
- Ceramic flooring

SIDE ENTRANCE

- Access to the garage and rear yard
- Double closet with built-in organizers
- Ceramic flooring

LUXURY FEATURES

-UPPER LEVEL-

PRIMARY BEDROOM

- Wall paneling with moulding
- Large windows with views of the rear yard
- Silk curtains with Hunter Douglas blackout blinds
- Soft close door into dressing room
- Hanging light pendant

PRIMARY ENSUITE

- Soaker Neptune tub with marble surround
- Custom double vanities with mirrors and over mount sconce
- Marble countertop with under-mount twin basins by Bosco
- Frameless glass enclosed shower with overhead rain shower and handheld
- Exhaust fan
- Picture window with view to front yard
- Marble heated flooring

WALK-IN CLOSET

- Lounge area with window
- Double walk-in closet with organizers and built-in cabinetry
- Ceiling fixture

SECONDARY BEDROOM

- Double door closet with built-in organizers
- Ceiling fixture
- Large window

JACK & JILL ENSUITE

- Custom double vanity with porcelain countertop and over mount fixture
- Double under mount basin
- Glass mosaic wall feature
- Large framed mirror
- Toto toilet
- Exhaust fan
- Porcelain floor

THIRD BEDROOM

- Double door closet with built-in organizers
- Ceiling fixture
- Large window

FOURTH BEDROOM

- Double door closet with built-in organizers
- Ceiling fixture
- Large window

FOURTH ENSUITE

- Custom vanity with porcelain countertop and Deca sink
- Large glass mirror with overhead fixture
- Seamless glass shower with ceramic subway tile
- Handheld faucet with temp control
- Toto toilet
- Exhaust fan
- Porcelain floor

LUXURY FEATURES

- LOWER LEVEL -

RECREATION ROOM

- Large window for natural light
- Built-in cabinetry with glass shelves
- Fireplace with stone surround
- Office area with cabinetry

CEDAR CLOSET

- Shelving
- Ceiling fixture

WASHROOM

- Tile backsplash with over counter sink and wall mounted
- Hanging pendant
- Toto toilet

UTILITY ROOM

- Access to sump pump
- Carrier furnace
- Triple filtration system (2021)
- Reliance hot water heater (2024)
- Solar Edge system
- Radiant floor heating
- 400 AMP electrical panel
- Central vacuum

GYM

- Vinyl flooring
- Glass mirrors
- Double windows
- Glass sliding door

WINE CELLAR

- Designed by Papro
- Danby Premiere dehumidifier
- Custom oak cabinetry with wine racks
- Display unit with quartz feature wall and uplighting
- Porcelain tile flooring

BEDROOM FIVE

- Two double door closet with built-in organizers
- Large window

POOL EQUIPMENT

- Hayward heater (2023)
- Hayward pump
- Hayward filters (2024)
- Wired for automatic pool cover
- Interior pool lights

INCLUSIONS

- All window coverings
- All light fixtures
- All Appliances
- All bathroom mirrors
- All televisions

*Not withstanding any items identified as features or inclusions or exclusions in this brochure, only those items identified as inclusions in the Agreement of Purchase and sale will be deemed an inclusion.



LISTING INFORMATION 267 EASTCOURT ROAD, OAKVILLE

Possession: To be arranged
Lot Size: 103.16' x 145.99' x 103.16' x 145.99'
Square Footage: 4,283 sq ft above grade
Total Square Footage: 6,723 sq ft
Deposit: 5%
Taxes: \$19,973 / 2025
Legal Description: LT 52, PL 581; S/T TW32293
Listing Agents: Brad Miller, Kieran McCourt
& Amanda Ashton-Aquino



GoodaleMillerTeam
CENTURY 21 MILLER REAL ESTATE LTD. BROKERAGE

905-338-2121 | **GoodaleMillerTeam.com**

9-209 Speers Rd, Oakville, ON L6K 0H5

Follow us on



#1 Team Globally for Century 21 for the last 5 consecutive years

#1 Team in Canada for Century 21 for 21 consecutive years